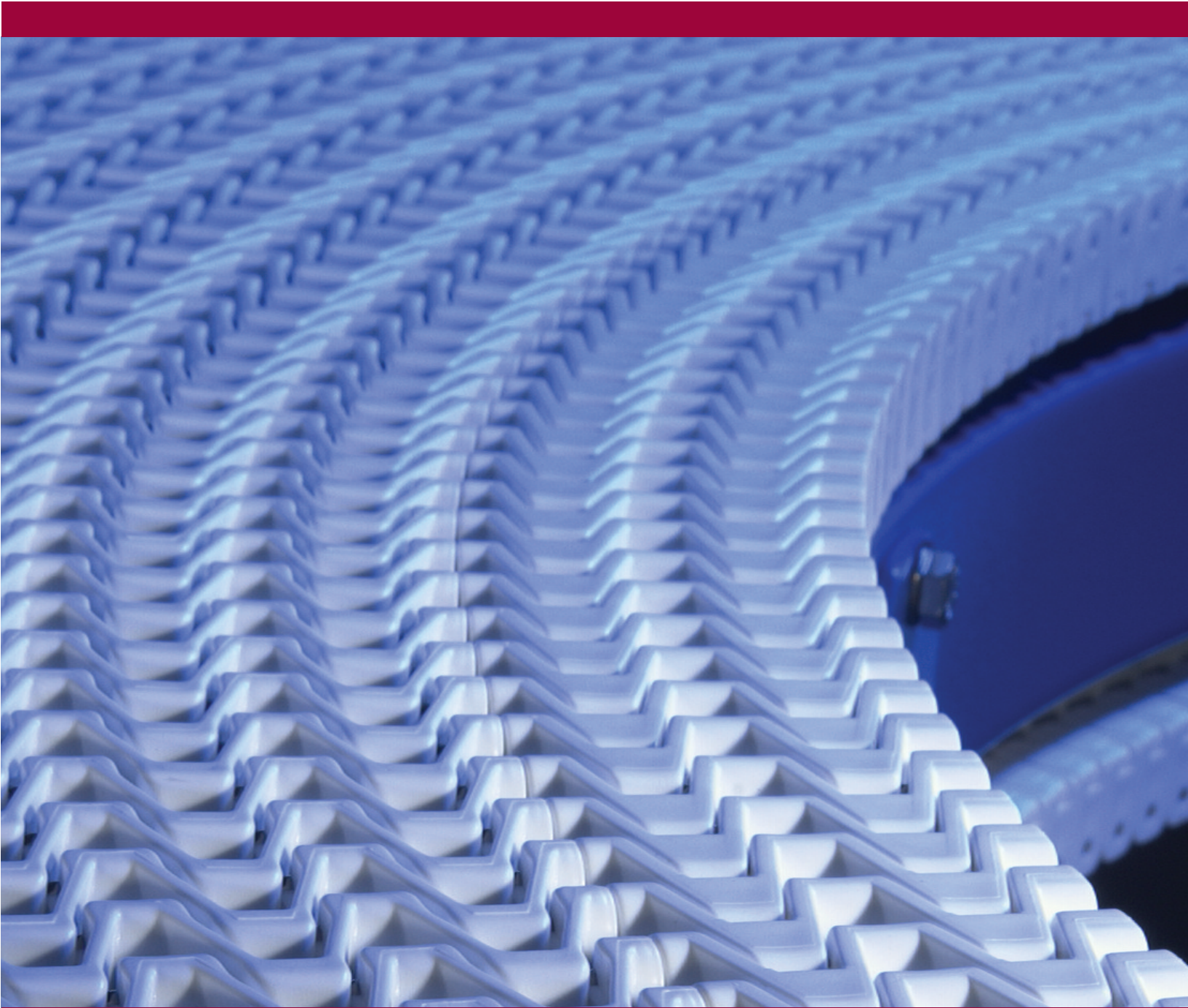


# CV-Series

CV-Series  
Single Curve Conveyors



**SpanTech**



***your Material Handling Specialist***

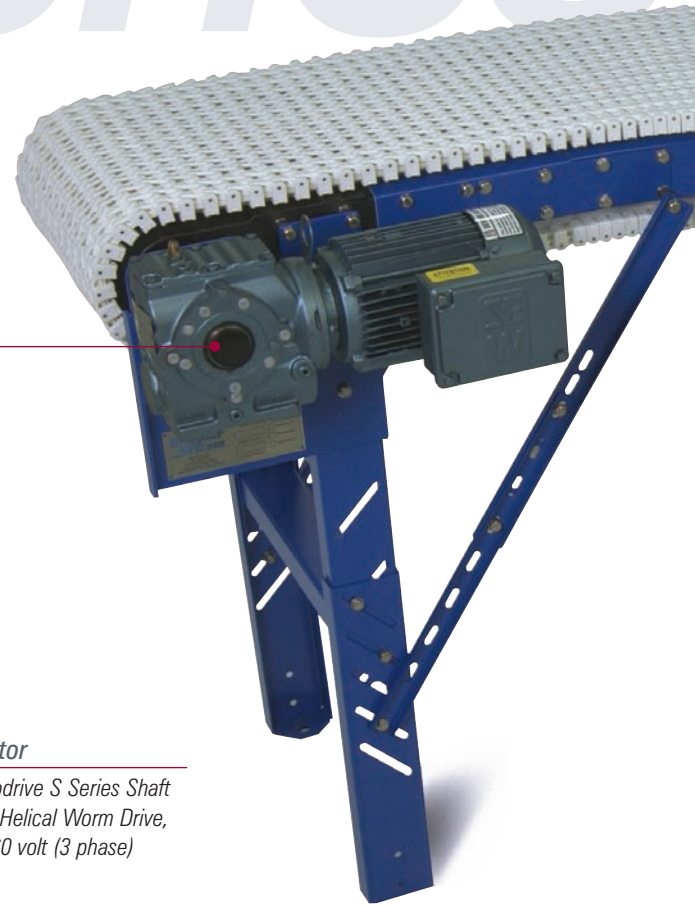
# CV-Series

**Engineered to have the tightest turning radius in the industry.**  
**Built for nearly maintenance-free operation and nearly silent running.**

The Span Tech CV-Series curving conveyors are ideal for those applications where you need to turn corners but floor space is limited. The CV model is a single curving conveyor with minimum end lengths. They're engineered to have the tightest turning radius in the industry and provide dependable, nearly maintenance-free operation. The CV-Series comes with the bed section fully assembled, with legs separate for quick assembly.

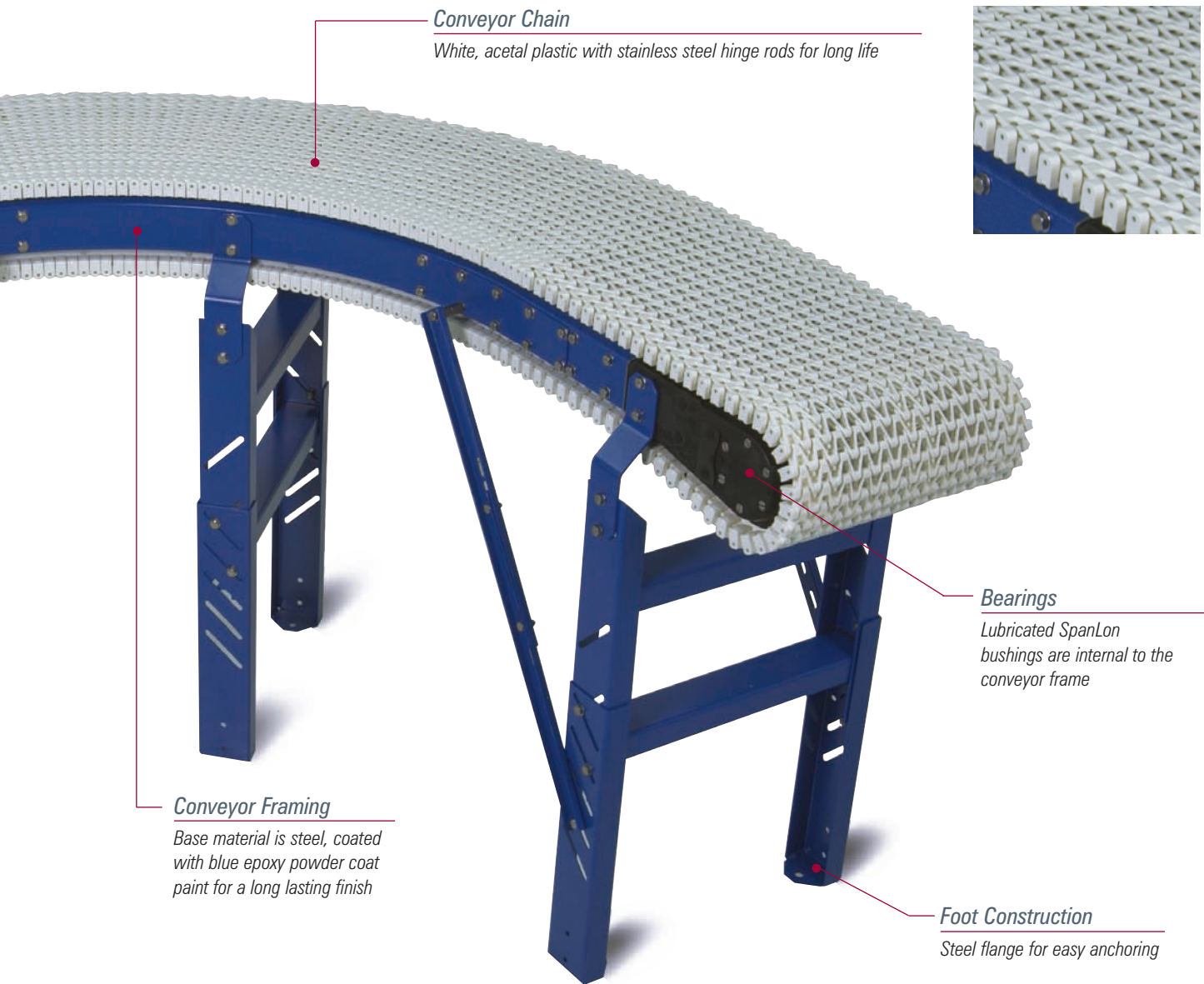
#### **Features & Benefits:**

- ◆ Six (6) belt widths available for a variety of applications
- ◆ Choose between 30-, 45-, and 90-degree curves
- ◆ Speed range of 5 to 75 feet per minute (1.5 to 22.9 meters per minute)  
Custom speed ranges available
- ◆ Increased load carrying capacity over a belt style conveyor
- ◆ Durable acetal chain provides long life, is completely self tracking, and is nearly silent running
- ◆ Two-piece drive and idler sprockets for ease of replacement without shaft removal
- ◆ Non-corroding stainless steel fasteners
- ◆ Non-corroding stainless steel drive shaft and idler shaft
- ◆ Nominal top of chain ranges from 22 inches (558.8mm) to 84 inches (2133mm)
- ◆ SpanLon wear strip and center support rail provide long-wearing, silent operation
- ◆ See individual models for minimum product size capability
- ◆ There are no "take ups" with Span Tech conveyors, as you have with belt conveyors. The overall length does not change.



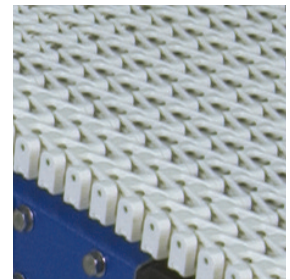
#### **Gearmotor**

SEW Eurodrive S Series Shaft Mounted Helical Worm Drive, 230 or 460 volt (3 phase) operation



**Conveyor Chain**

White, acetal plastic with stainless steel hinge rods for long life



**Bearings**

Lubricated SpanLon bushings are internal to the conveyor frame

**Conveyor Framing**

Base material is steel, coated with blue epoxy powder coat paint for a long lasting finish

**Foot Construction**

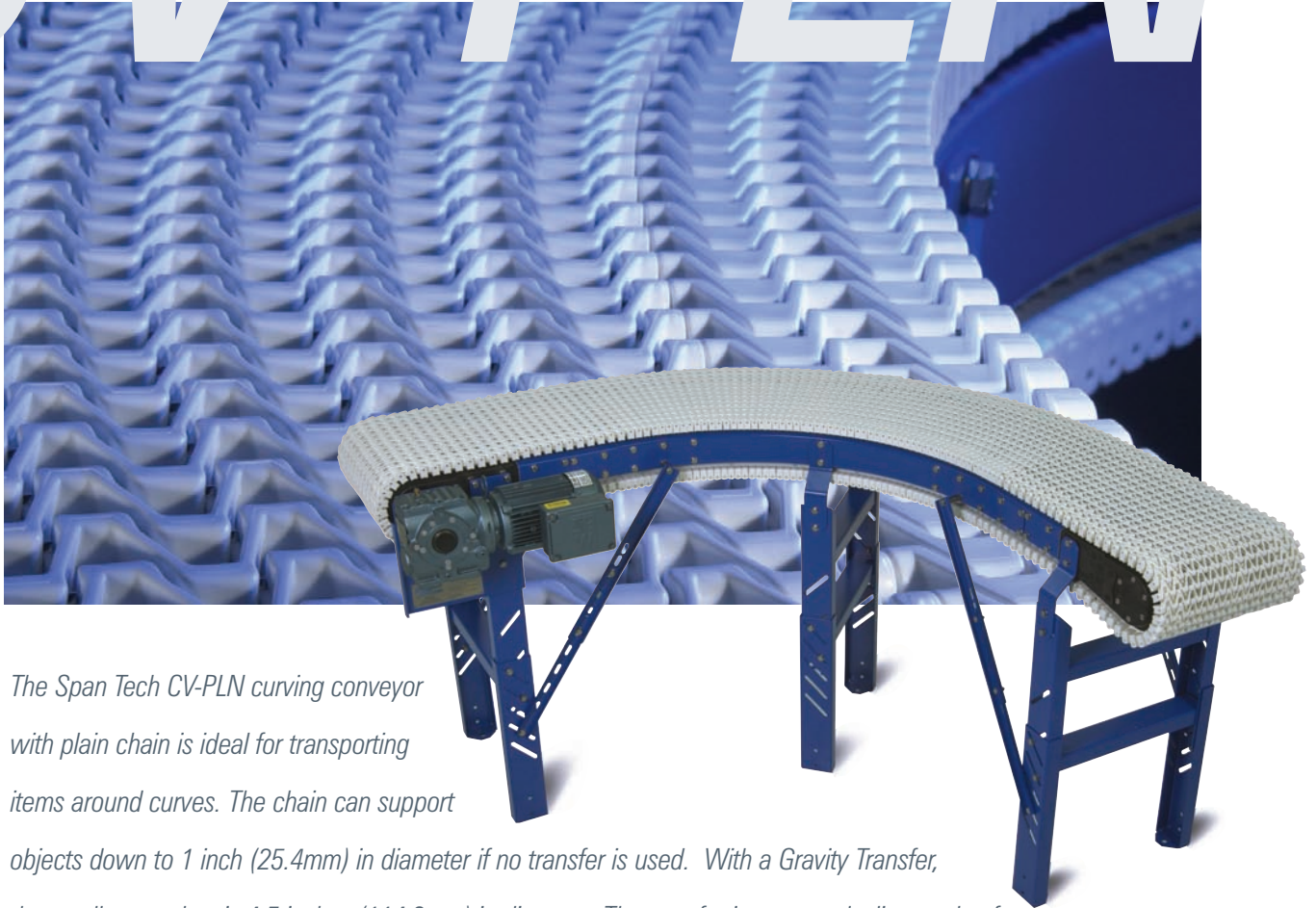
Steel flange for easy anchoring

**Ease of maintenance ...**



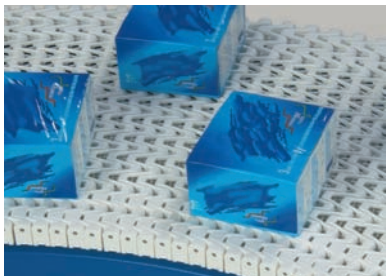
Chain can be taken apart at any link

## CV-PLN Plain Chain



*The Span Tech CV-PLN curving conveyor with plain chain is ideal for transporting items around curves. The chain can support objects down to 1 inch (25.4mm) in diameter if no transfer is used. With a Gravity Transfer, the smallest product is 4.5 inches (114.3mm) in diameter. The transfer is set to a decline angle of approximately 6°. The tight knit of the chain lattice provides a smooth base for small products and offers the tightest turning radius in the industry.*

### *Ideal for ...*



*Small packaged items*

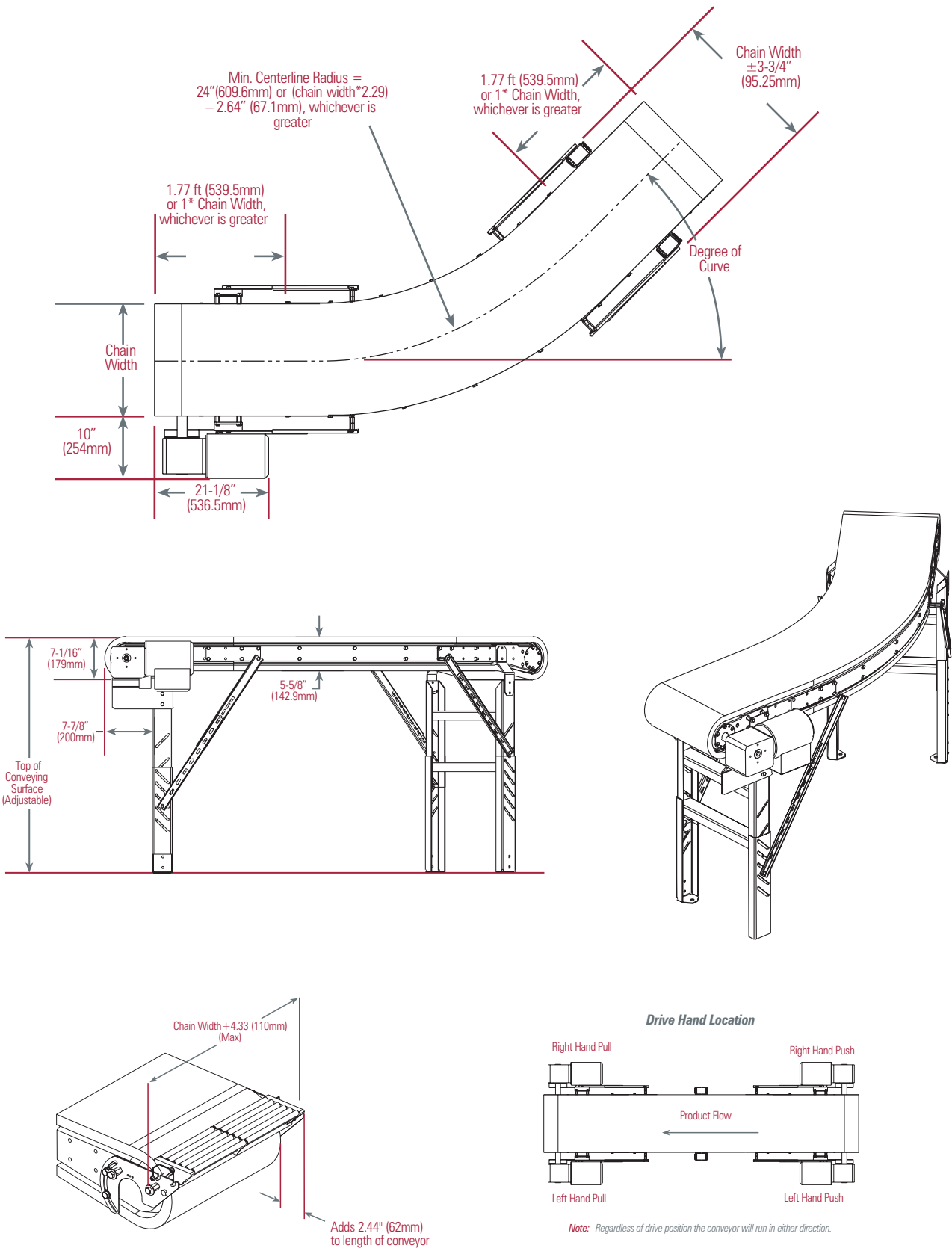


*Carton transporting*



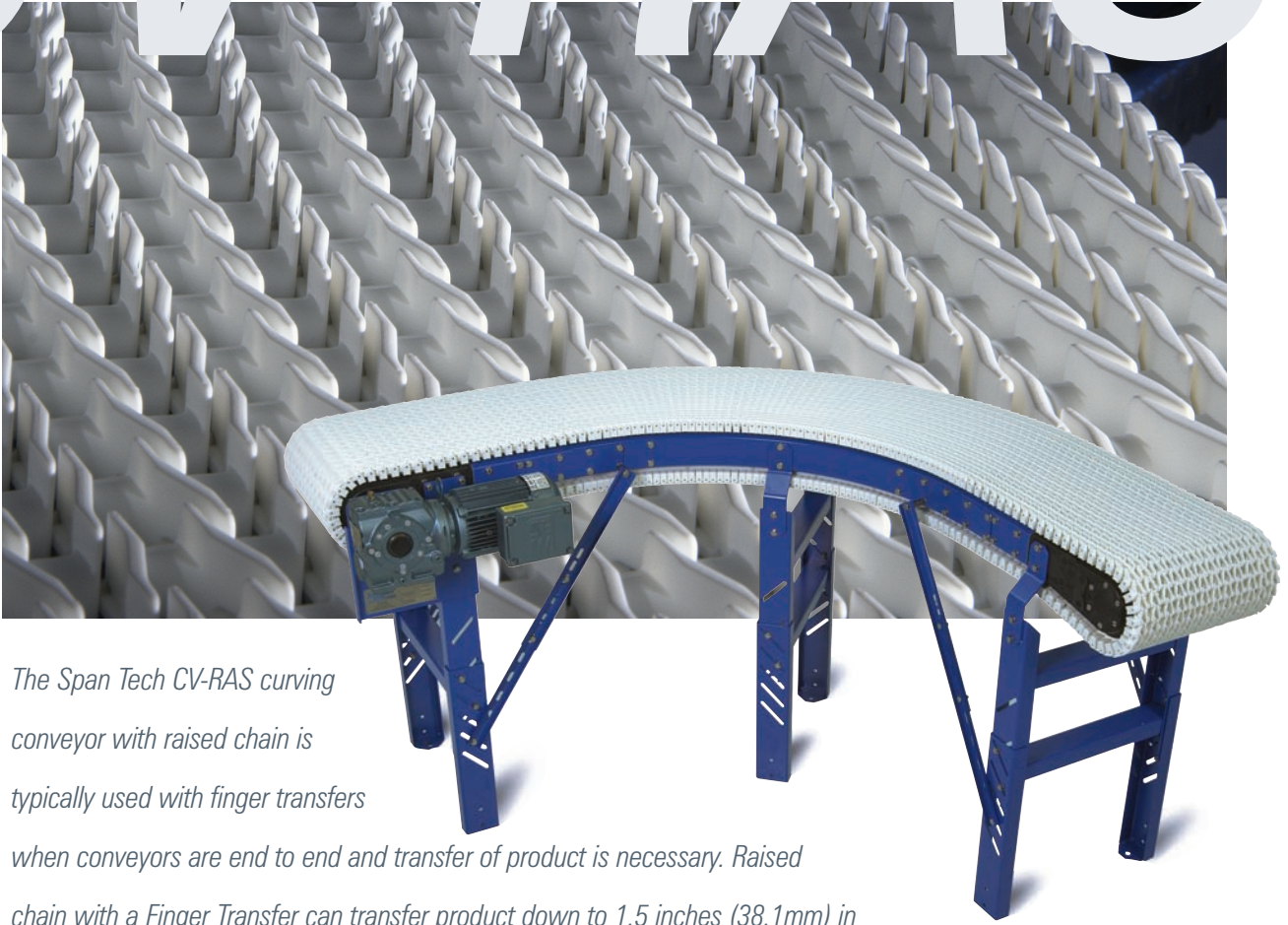
*End-to-end transfers*

# CV-PLN Specifications



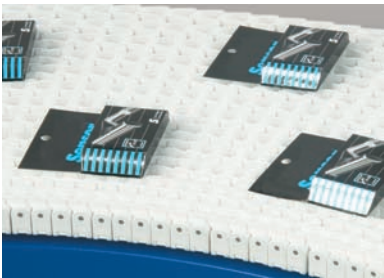
# CV-RAS

*CV-RAS Raised Chain*



*The Span Tech CV-RAS curving conveyor with raised chain is typically used with finger transfers when conveyors are end to end and transfer of product is necessary. Raised chain with a Finger Transfer can transfer product down to 1.5 inches (38.1mm) in diameter. The transfer is set to a decline angle of approximately 10°. Raised top chain can also be used to reduce the amount of contact between the chain and the product being transported, increasing airflow.*

***Ideal for ...***



*Fragile packaging*

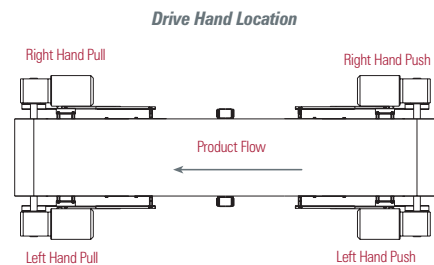
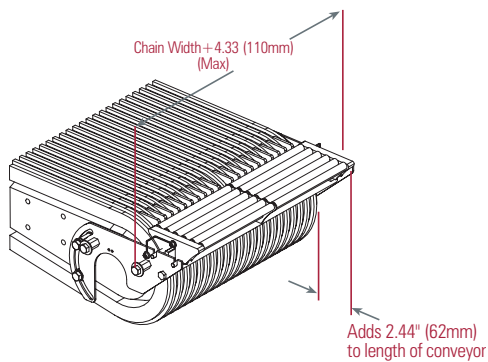
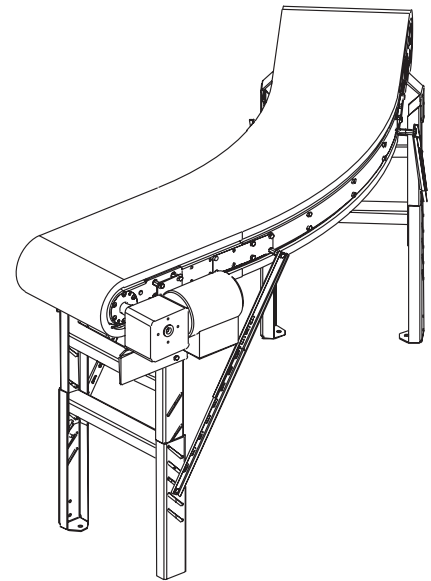
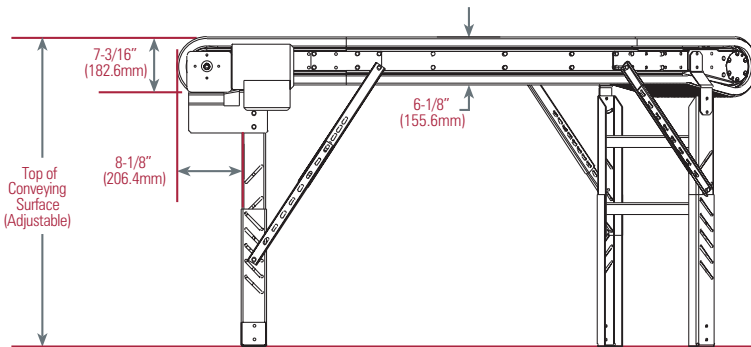
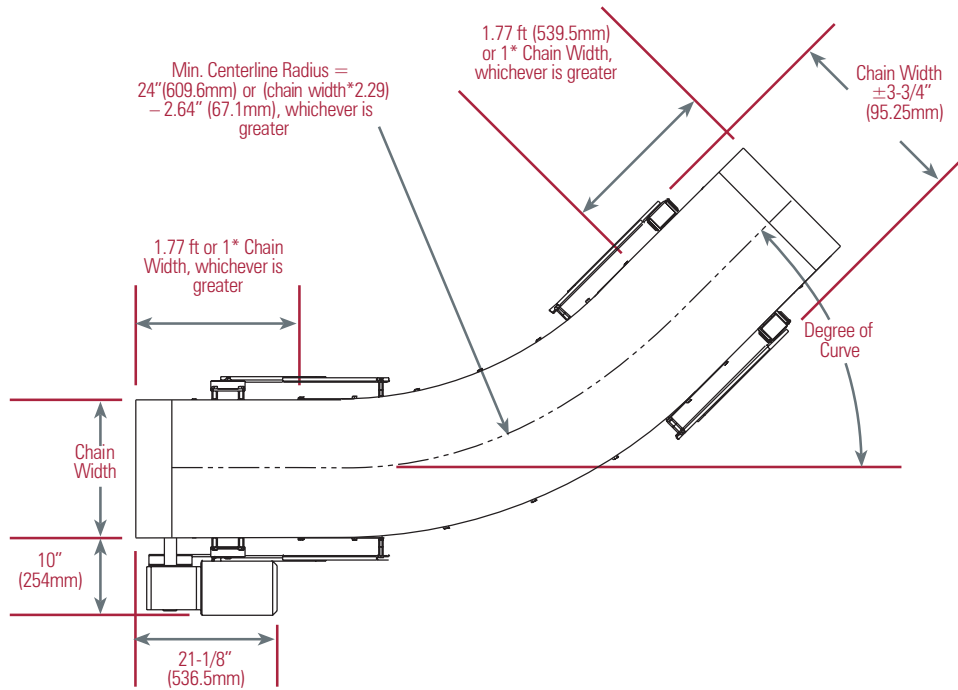


*Bagged products*



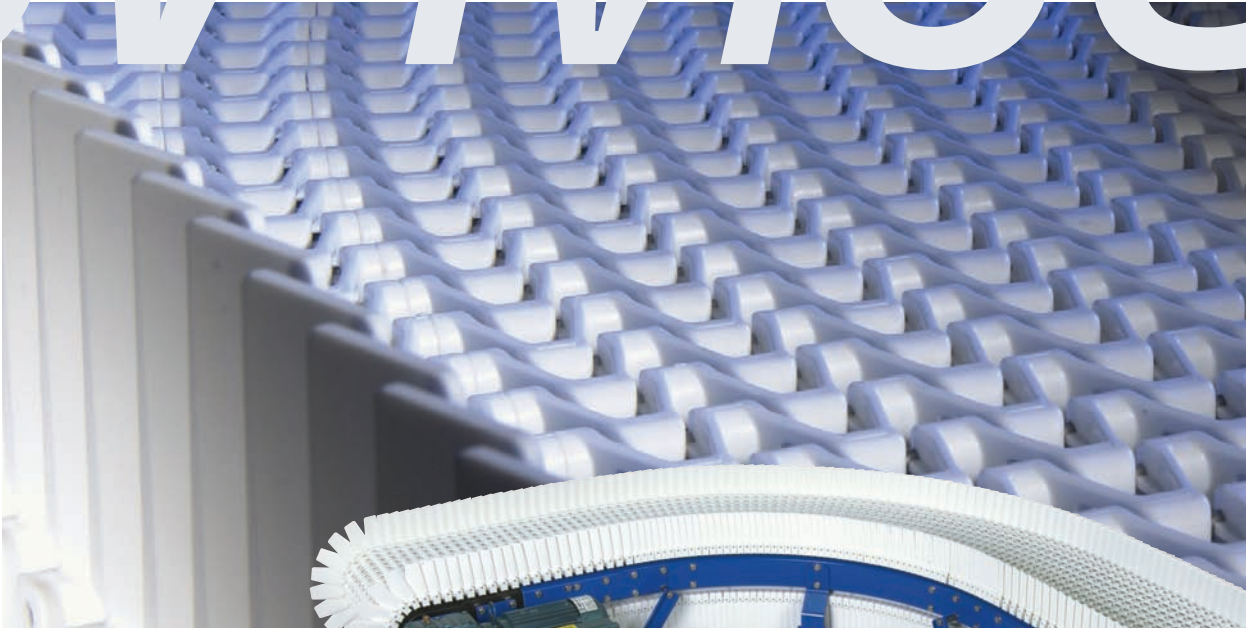
*End-to-end transfers*

# CV-RAS Specifications



*Note:* Regardless of drive position the conveyor will run in either direction.

# CV-MSG Moving Side Guide Chain



*The Span Tech CV-MSG curving conveyor with moving side guide chain features 75mm left and right guides molded into the side links. This feature provides positive retention of products during transportation through the curve. Use this type of chain where the product you are moving might get tangled in conventional guide rails. Gravity or Finger Transfers are not available with this type of conveyor chain.*

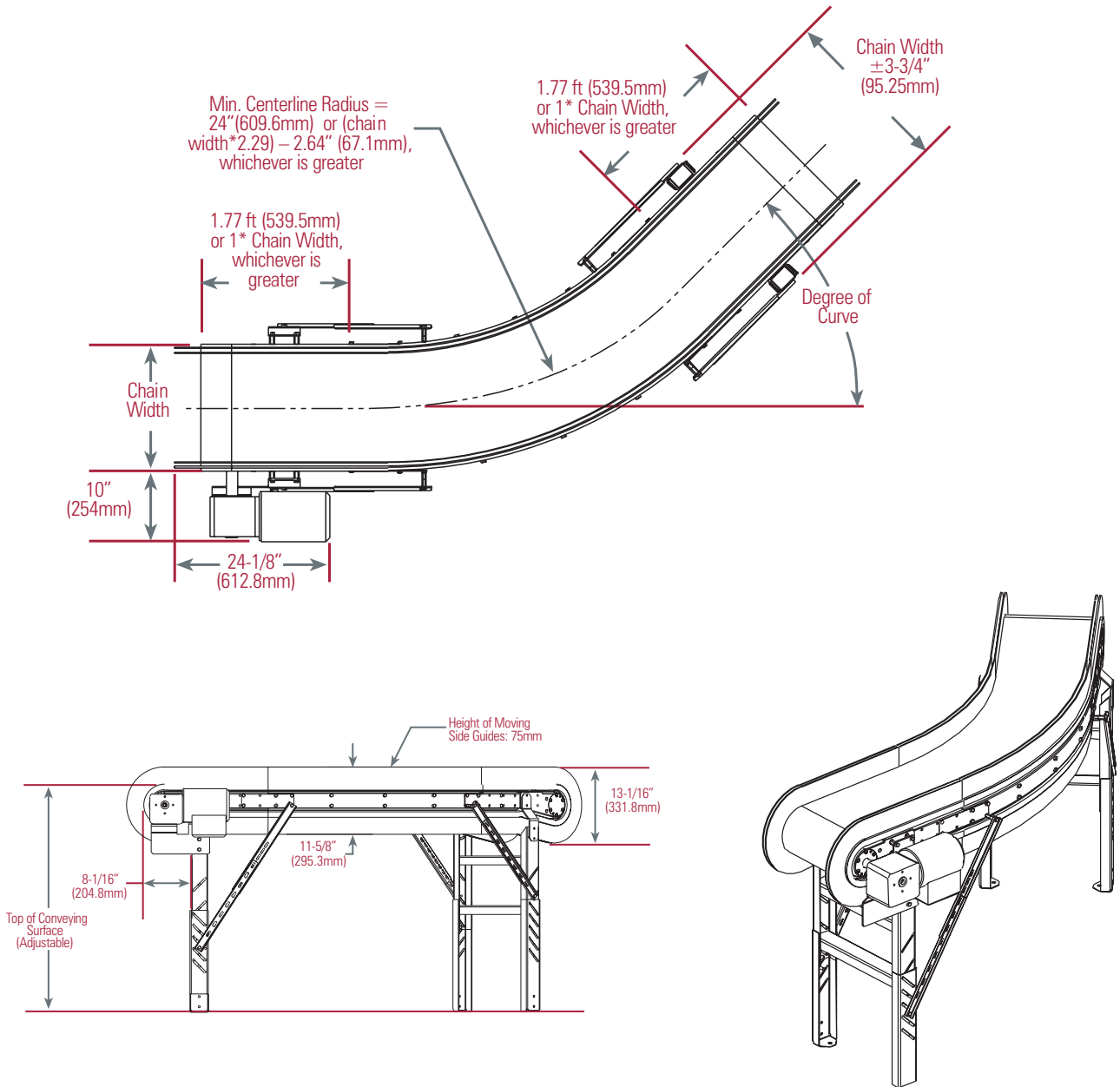
***Ideal for ...***



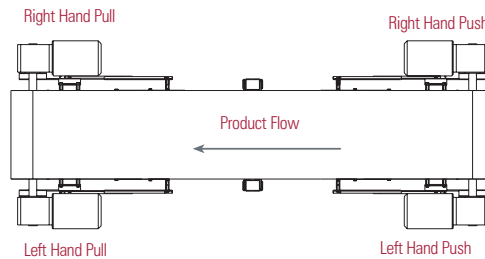
*Bulk product*



# CV-MSG Specifications



### Drive Hand Location



*Note:* Regardless of drive position the conveyor will run in either direction.

## Options



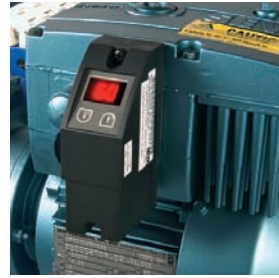
### Fixed Offset Guide Rail

Inside face of guide rail matches with edge of conveyor chain. The guide rail material is ultra-high molecular weight polyethylene with a galvanized steel back channel for durability. The guide rail comes in both 1.25 inch (31.8mm) and 2.25 inch (57.2mm) widths.



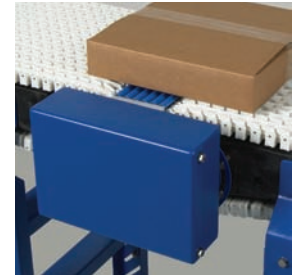
### Gravity Transfer

This option permits transfer onto and off of the ends of the conveyor. These units lift out and are held in place by gravity as a safety feature to prevent objects from becoming lodged between the conveyor chain and the transfer rollers. The transfer uses small acetal rollers mounted on 4mm stainless steel rods. The unit is pitch adjustable from level to  $-15^\circ$  at the discharge end and from  $+15^\circ$  to level on the load end. See Transfer Guidelines chart for application guidelines.



### Movimot® Speed Controller

This is a frequency inverter built into the conduit box of the drive motor, with no external wiring other than your incoming power lines. Movimot® provides you with the lowest cost method of controlling the speed of your conveyor. The unit is capable of 200 to 500 volts AC and has a frequency range of 20 to 80 hertz. The unit features an integrated potentiometer for setting acceleration and deceleration times. It is IP65 hose proof/dust proof enclosed.



### Slave Drive

The optional Slave Drive unit is available for plain and raised style chains. This option allows two different conveyors to be driven by a single gear-motor. Consult a Span Tech representative for compatibility with your system.



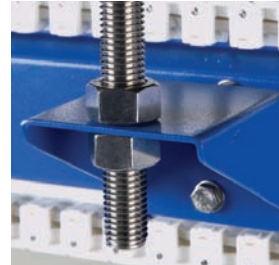
### Articulated Foot

Made of plastic with a steel reinforced core and non-slip pad attached to the underside of the foot, these feet provide a freestanding support for the conveyor frame. Foot option increases top of chain elevation 5" (127mm).



### Caster

4" (100mm) diameter locking caster for mounting on the conveyor leg. As a safety limitation, not available on conveyors weighing more than 800 lbs. (364 kilos). Foot option increases top of chain elevation 5" (127mm). The maximum conveyor height is 47" (119.4cm) for casters.



### Ceiling Support Bracket

Painted mild steel brackets bolt to the side of the conveyor frame and support your system on 5/8" (15mm) hanger rods.

## Options for CV Series Conveyors

	Fixed Offset Guide Rail	Gravity Transfer	Movimot Speed Controller	Slave Drive Capable	Articulated Foot	Caster	Ceiling Support Brackets
CV-PLN	•	•	•	•	•	•	•
CV-RAS	•	•	•	•	•	•	•
CV-MSG			•		•	•	•

## CV-Series Specifications

### Dynamic Load Capacity (not to exceed 50 lbs. Per Linear Ft.)

#### Standard Conveyor @ 65 FPM

H.P.	3.76" Chain Width* Total Load			7.31" Chain Width Total Load			10.85" Chain Width Total Load		
	30°	45°	90°	30°	45°	90°	30°	45°	90°
1/3 hp	230 lbs	255 lbs	335 lbs	230 lbs	255 lbs	335 lbs	230 lbs	255 lbs	335 lbs
1/2 hp	230 lbs	255 lbs	335 lbs	230 lbs	255 lbs	335 lbs	230 lbs	255 lbs	335 lbs
3/4 hp	230 lbs	255 lbs	335 lbs	230 lbs	255 lbs	335 lbs	230 lbs	255 lbs	335 lbs

H.P.	14.39" Chain Width Total Load			17.94" Chain Width Total Load			21.48" Chain Width Total Load		
	30°	45°	90°	30°	45°	90°	30°	45°	90°
1/3hp	245 lbs	275 lbs	375 lbs	260 lbs	305 lbs	430 lbs	280 lbs	330 lbs	417 lbs
1/2hp	245 lbs	275 lbs	375 lbs	260 lbs	305 lbs	430 lbs	280 lbs	330 lbs	485 lbs
3/4hp	245 lbs	275 lbs	375 lbs	260 lbs	305 lbs	430 lbs	280 lbs	330 lbs	485 lbs

\* 3.76" chain width only available in PLN and RAS style chains

### Dynamic Load Capacity (not to exceed 74 Kg Per Linear Meter)

#### Standard Conveyor @ 20 meters per minute

H.P.	95.5mm Chain Width* Total Load			185.7mm Chain Width Total Load			275.6mm Chain Width Total Load		
	30°	45°	90°	30°	45°	90°	30°	45°	90°
1/3hp	104 kg	116 kg	152 kg	104 kg	116 kg	152 kg	104 kg	116 kg	152 kg
1/2hp	104 kg	116 kg	152 kg	104 kg	116 kg	152 kg	104 kg	116 kg	152 kg
3/4hp	104 kg	116 kg	152 kg	104 kg	116 kg	152 kg	104 kg	116 kg	152 kg

H.P.	365.5mm Chain Width Total Load			455.7mm Chain Width Total Load			545.6mm Chain Width Total Load		
	30°	45°	90°	30°	45°	90°	30°	45°	90°
1/3hp	111 kg	125 kg	170 kg	118 kg	138 kg	195 kg	127 kg	150 kg	189 kg
1/2hp	111 kg	125 kg	170 kg	118 kg	138 kg	195 kg	127 kg	150 kg	220 kg
3/4hp	111 kg	125 kg	170 kg	118 kg	138 kg	195 kg	127 kg	150 kg	220 kg

\*95.5mm chain width only available in PLN and RAS style chains

### CV-Series Transfer Guidelines

Model & Chain Type	Transfer Type	Smallest Diameter Product Recommended	Maximum Height Recommended	Decline Angle of Transfer	Conveyor Speed Tested	Weight Tested
CV-PLN	Plain with rollers	4.5"(114.3 mm)	9" (228.6mm)	6°	65 fpm	97.8 oz. (2774 g)
CV-RAS	Finger Transfer	1.5"(38.1mm)	1.25" (31.75mm)	10°	65 fpm	1.45 oz. (41 g)
CV-MSG	Transfer not available	X	X	X	X	X

Information based upon controlled environment and specific product.

### Smallest Recommended Product Diameter For Chain Surface

CV-PLN	1" (25.4mm)
CV-RAS	1.125" (28.6mm)
CV-MSG	1" (25.4mm)



*Span Tech LLC  
1115 Cleveland Avenue  
P. O. Box 369  
Glasgow, Kentucky 42141  
Phone: (270) 651-9166  
general\_info@spantechllc.com  
www.spantechllc.com*